

Date: April 2021



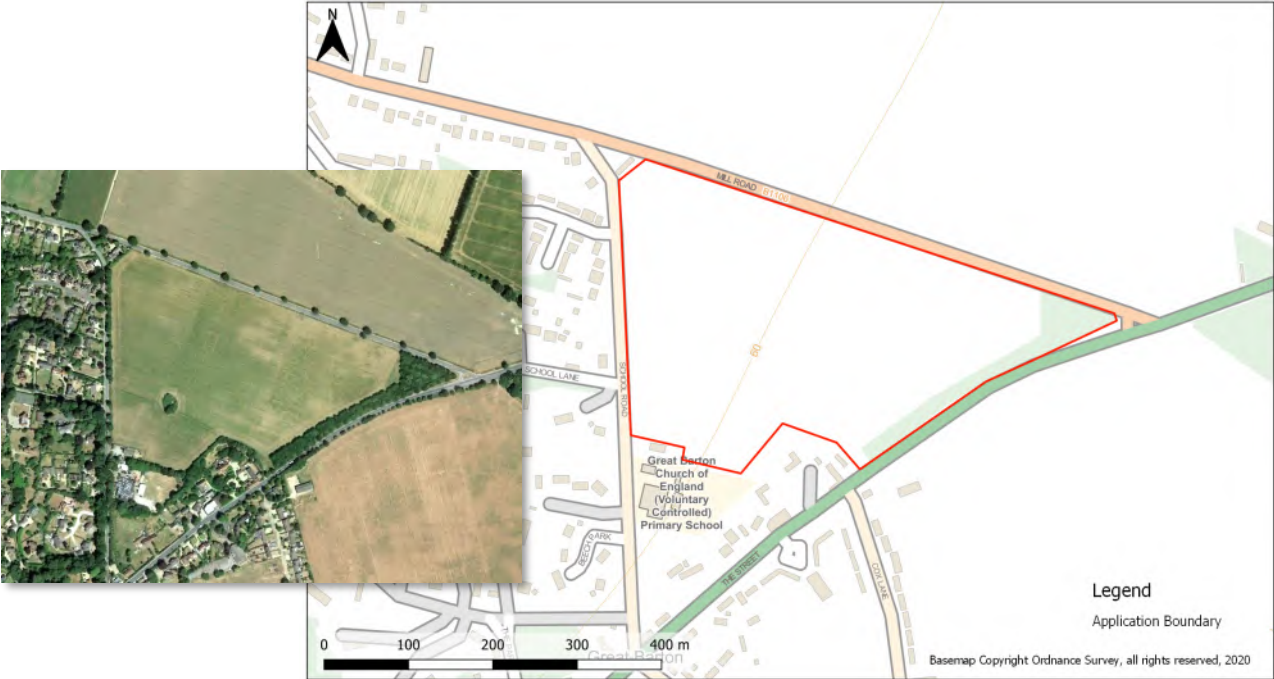
DRAFT

PRELIMINARY REPORT - FOR INFORMATION PURPOSES ONLY

Global leaders in environmental and advisory solutions



Site Location



Grid Reference Middle

TL 89334 67395

Grid Reference (6 figure)

TL983673

X (Easting): Y (Northing):

589334 267395

Latitude: Longitude:

52.272097 -0.077355981

Address Near:

The St, Great Barton, Bury St Edmunds.

Postcode (nearest):

IP31 2RT

Enclosures

Utility Type	Company	In-house Search	In Vicinity of Development	Not In Vicinity of Development	No Response Received to Date
Water Mains	Anglian Water		19/04/2021		
Drainage	Anglian Water		19/04/2021		
Gas	Cadent		19/04/2021		
Openreach (BT)	BT	x	19/04/2021		
CATV	Virgin	x	19/04/2021		
Electric	UKPN		19/04/2021		
Communication	Colt			19/04/2021	
	Sky			19/04/2021	
	Instalcom			19/04/2021	
	SOTA			19/04/2021	
	Zayo		19/04/2021		
	SSE Neos Networks			19/04/2021	
	gtc			19/04/2021	
	EU networks		19/04/2021		
	Verizon			19/04/2021	
	Cityfibre			19/04/2021	
	KCOM			19/04/2021	
	Gtt		19/04/2021		
Energetics			19/04/2021		
Environment Agency				19/04/2021	
Council				19/04/2021	
Tunnels & Pipelines	BT Deep Level Tunnels			19/04/2021	
	Thames Water Ring Main			19/04/2021	
	Post Office Tunnels			19/04/2021	
	Heathrow			19/04/2021	
	MOD			19/04/2021	
	Post Office			19/04/2021	
CHL (Fisher German)			19/04/2021		
Transport	Canal & River Trust			19/04/2021	
	Network Rail			19/04/2021	
	Crossrail			19/04/2021	
	London Underground / LUHV			19/04/2021	
	Docklands Light Railway			19/04/2021	
	Private Rail Lines			19/04/2021	
	Trams			19/04/2021	
	Traffic Master			19/04/2021	
Also Not Affected					
	AWE Pipeline Esso Petroleum Company Limited Perenco UK Limited (Purbeck Southampton Pipeline) BOC Limited Fulcrum Pipelines Limited Petroineos BP Midstream Pipelines Phillips 66 Gateshead Energy Company Premier Transmission Ltd (SNIP) Carrington Gas Pipeline Gigaclear PLC Prysmian Cables & Systems Ltd (c/o Western Link)			CATS Pipeline c/o Wood Group PSN Humbly Grove Energy Redundant Pipelines - LPDA Cemex IGas Energy RWEpower (Little Barford and South Haven) Centrica Energy Ineos Enterprises Limited SABIC UK Petrochemicals Centrica Storage Ltd	

Abbreviations

Apparatus	
Electric:	
DNO	Distribution Network Operator
iDNO	Independent Distribution Network Operator
ICP	Independent Connections Provider
LV	Low Voltage
HV	High Voltage
EHV	Extra High Voltage
kVA	Kilovolt Amperes
MVA	Megavolt Amperes
AC	Alternating Current
S/S	Substation
PMT	Pole Mounted Transformer
Gas:	
GT	Gas Transporter
iGT	Independent Gas Transporter
UIP	Utility Infrastructure Provider
PRS	Pressure Reducing Station (Governor)
LP	Low Pressure
MP	Medium Pressure
IP	Intermediate Pressure
HP	High Pressure
Water	
SLO	Self Lay Organization
Incumbent	Local Water only or Water & Sewerage Company
WRAS	Water Regulation Advisory Scheme
Other	
PE	Polyethylene
DI	Ductile Iron
ST	Steel
CI	Cast Iron
SI	Spun Iron
HPPE	High Performance Polyethylene
MDPE	Medium Density Polyethylene
CATV	Cable Television
GRP	Glass Reinforced Plastic
FTTP	Fibre to the premise
FTTC	Fibre to the cabinet
l/min	Litres per minute
H&S	Health and Safety
HBF	House Builders Federation
TPO	Tree Preservation Order

Enclosure Table Key

Desk Research

A Cross in this column indicates that the response has been determined In-house.

In Vicinity

Utility plant is expected to be within, adjacent to or very close to the search area. It is recommended to liaise with the utility in advance of any works taking place

Not In Vicinity

Utility plant is not expected to be within, adjacent to or very close to the search area. It may be located some distance from the search area.

Relevant Documents

The following documents must be referred to before work commences in the vicinity of existing services:

Health and Safety Booklet HS (GS) 6 Avoidance of Danger from Overhead Electric Lines.

General Safety Measures to Avoid Injury and Damage to Gas Apparatus.

HSE Guidance Note HS (G) 47 Avoiding Danger from Underground Services.

National Joint Utilities Group (NJUG) Publications Vol. 1.

CDM Regulations 2007 (Regulation 34 – Energy Distribution Installations).

Electricity at Work Regulations 1989.

Basic Risk Assumption for all Services

When dealing with existing services the following assumptions must always be accepted:

All existing buildings have gas, water electric and telecoms supplies to them until proven otherwise.

Any supply to an existing building, no matter how old the building is or how deteriorated the supply may appear, is taken to be 'live' until proven otherwise. All open land, vacant lots and derelict sites are deemed to have services beneath them until proven otherwise.

The only acceptable proof that a service is 'dead' and can be removed is written confirmation from the owner of the service. The quality and accuracy of information provided by utilities about their existing plant is indicative and no warranty is made as to its accuracy. Therefore, any utility record plans and/or marked up drawings provided by each utility must only be used as a guide and the actual location of plant should be verified by CAT Scan or trial holes before construction works commence.

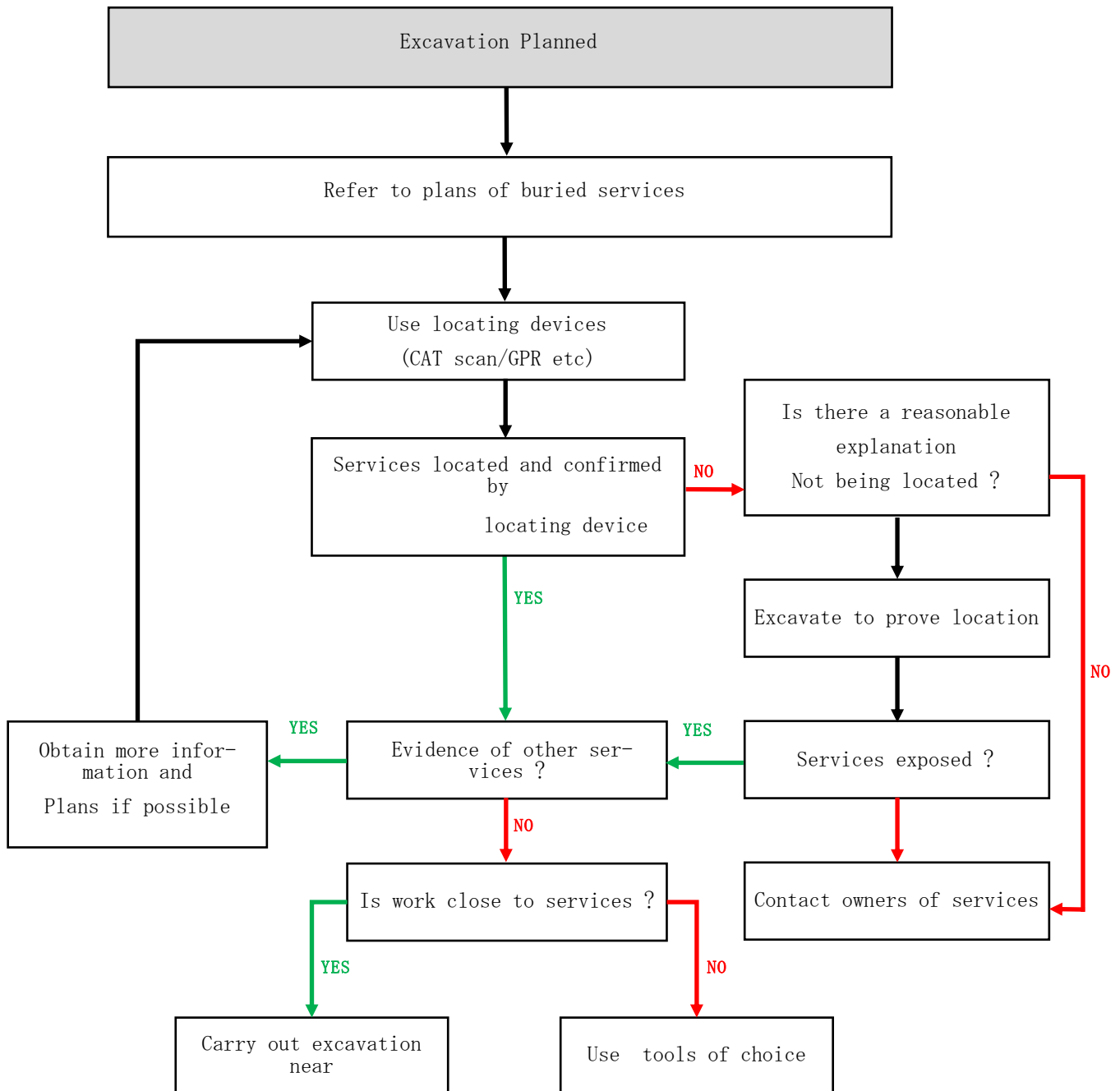
Please note not all service connections are shown on the utility record plans.

Plant Found Within Site Boundaries

Where utility plant is found within the site boundary, it is recommended for the client to check for legal easements or wayleaves.

Diversions of plant within site boundaries can be expensive and time consuming to relocate. Further investigation of costs and timescales are recommended. Please ask PES for further details.

This flow diagram is intended to help give an understanding of the process from referring to plans on-site through to the start of excavation.



For example, could services be non-metallic pipes? Please refer to HS (G) 47 text for further information.

† In particular; visual evidence. Ensure that the presence of services, which may be unmarked on plans or for which no plans are available, has been considered, for example service connections.



*** If there is visual evidence of services, but owners cannot be traced, despite all reasonable attempts to do so, any excavation could proceed but using hand-dug trial holes and proceeding with great care.*

Utility Guidance

Guidelines on the Positioning and Colour Coding of Underground Utilities' Apparatus

Recommended Colour Coding of Underground Utilities Apparatus

All depths are from the surface level to the crown of the apparatus.

Utility	Duct	Pipe	Cable	Marker Systems	Recommended Minimum Depths	
					Footway Verge	Carriageway
Electricity HV (High Voltage)	Black or red duct or tile	N/A	Red or black	Yellow with black and red legend or concrete tiles	450mm - 1200mm	750m - 1200mm
Electricity LV (Low Voltage)	Black or red duct or tile	N/A	Black or red	Yellow with black legend		750mm
Gas	Yellow	* See row below	N/A	Black legend on PE pipes every linear metre.	600mm footway 750mm verge	750mm
*** PE - up to 2 bar - yellow or yellow with brown stripes (removable skin revealing white or black core pipe). - between 2 to 7 bar -orange. Steel pipes may have yellow wrap or black tar coating or no coating. Ductile Iron may have plastic wrapping Asbestos & Pit / Spun Cast Iron – No distinguishable colour						
Water non Potable & Grey Water	N/A	Black with green stripes	N/A	N/A	600mm - 750mm	600mm - 750mm
Water - Firefighting	N/A	Black with red stripes or bands	N/A	N/A	600mm - 750mm	600mm - 750mm
Oil / fuel pipelines	N/A	Black	N/A	Various Surface markers Marker tape or tiles above red concrete	900mm All work within 3 metres of oil fuel pipelines must receive prior approval	900mm All work within 3 metres of oil fuel pipelines must receive prior approval
Sewerage	Black	No distinguishing colour / material (eg: Ductile Iron may be red; PVC may be brown)	N/A	N/A	Variable	Variable
Communications	Grey, white, green, Black, purple	N/A	Black or Light Grey	Various	250mm - 350mm	750mm minimum
Water 	Blue or Grey	Blue polymer or blue or uncoated Iron / GRP. Blue polymer with brown stripe (removable skin revealing white or black pipe)	N/A	Blue or blue/black	750mm	750mm minimum
Water pipes for special purposes (e.g. contaminated ground) 	N/A	Blue polymer with brown stripes (non removable skin)	N/A	Blue or blue/black	750mm	750mm minimum

*These guidelines describe utility industry practice. However, it should not be Assumed that all apparatus will conform the recommendations for positioning And colour coding contained in this report.

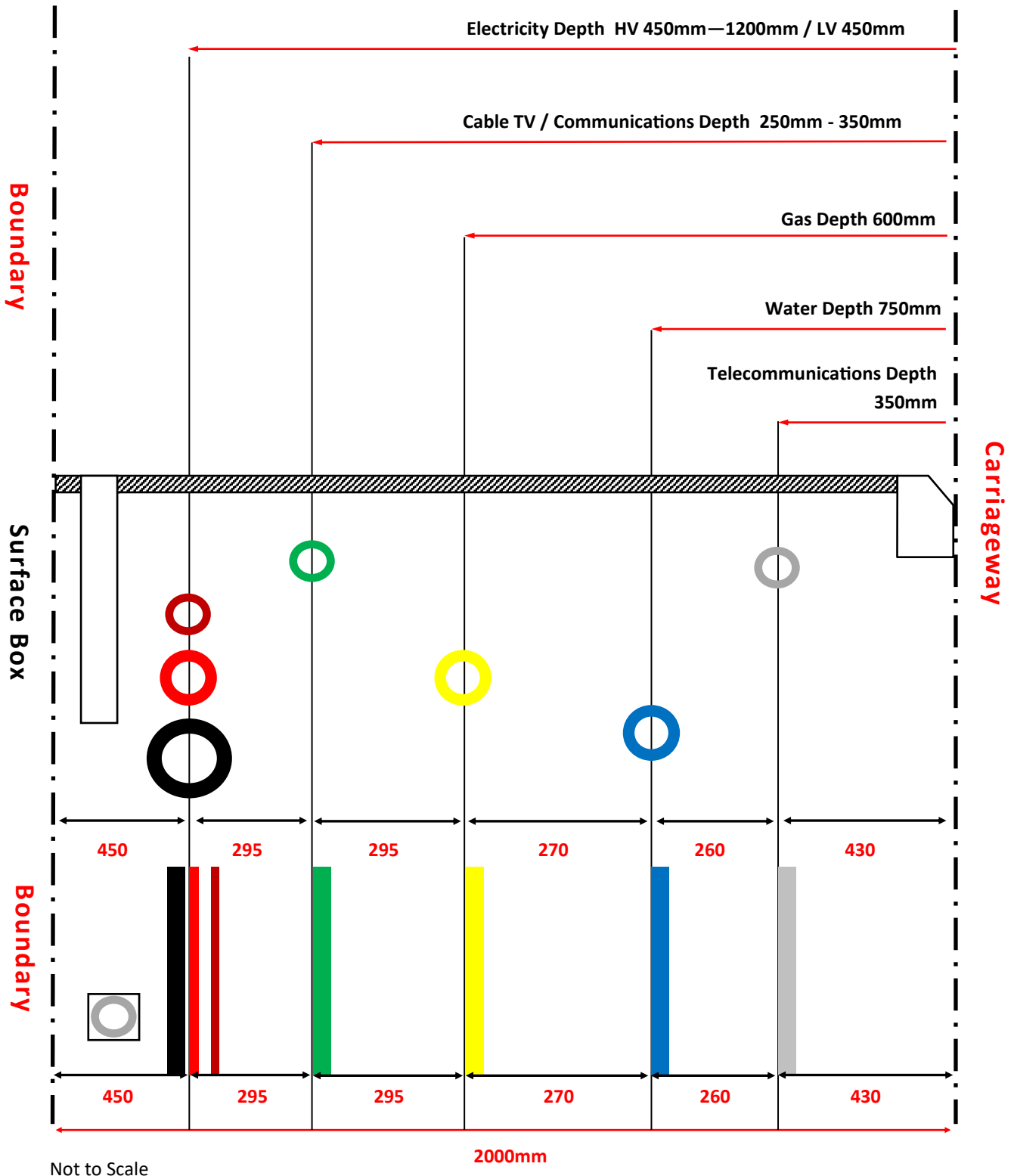
Recommended Colour Coding of Other Underground Apparatus All depths are from the surface level to the crown of the apparatus.

Utility	Duct	Pipe	Cable	Marker Systems	Recommended Minimum Depths	
					Footway Verge	Carriageway
At the time of publication the following were current examples of known highway authority apparatus colour coding but local variations may occur.						
Street Lighting						
England and Wales	Orange	N/A	Black	Yellow with black legend	450mm	600mm
Scotland	Purple	N/A	Purple	Yellow with black legend	450mm	450mm
Northern Ireland	Orange	N/A	Black or orange		450mm	450mm
Other						
Traffic Control	Orange	N/A	Orange	Yellow with black legend		
Street Furniture		N/A	Black	Yellow with black legend	450mm	600mm
Communications		N/A	Light grey or black	Yellow with black legend		
CCTV	Purple	N/A		Yellow with black legend		
Motorways and Trunk Roads England and Wales						
Communications	Purple	N/A	Grey	Yellow with black legend	450mm	
Communications Power	Purple	N/A	Black	Yellow with black legend		
Road Lighting	Orange	N/A	Black	Yellow with black legend		
Scotland						
Communications ○ ●	Black or grey	N/A	Black	Yellow with black legend		
Road Lighting	Purple	N/A	Purple	Yellow with black legend		

*These guidelines describe utility industry practise. However, it should not be assumed that all apparatus will conform to the recommendations for Positioning and colour coding contained in this publication.

NJUG Guidelines on the Positioning and Colour Coding of Underground Utilities Recommended Positioning of Utility Apparatus in a 2 metre Footway (s)

Note - the same positioning should apply in the carriageway service strip (if safe and practical to do so) where a development has footways available for services and or the boundary of the property in on the carriageway (please refer to minimum depths in carriageways)
For further advise please contact the asset owner.



Other warnings

WARNING
PIPELINE OFFSET
BEHIND MARKER



The markers may not always be directly over the pipeline. In which case an additional warning sticker will indicate the direction of off-set.



Studs such as these may be found in footpaths and car parks etc.

CAUTION
THIS STRUCTURE IS IN CLOSE PROXIMITY TO A HIGH PRESSURE OIL PIPELINE.
BEFORE COMMENCING ANY EXCAVATION WORK PLEASE CALL
FREEPHONE 0800 XXXXXXXX.



You may find signs such as these on apparatus close to the pipeline.

When the pipeline route has been located it will be marked with location pegs.



Stilette warning marker



Pole warning marker

IMPORTANT

Marker posts only denote the presence of our pipelines. Never presume that the pipeline runs in a straight line between marker posts as there could either be a bend or the posts may have been moved without our knowledge.

DO NOT PRESUME ANYTHING: TELEPHONE OUR AGENTS AND WE WILL SEND SOMEONE TO VERIFY EXACTLY WHERE THE PIPELINE IS SITUATED.



*Watch out
there's a pipeline
about!*

Typical pipeline Markers



LINENWATCH WEBSITE

www.linewatch.co.uk

Revision No. 06.1

Awareness and preparation is the key to safe excavation



Typical pipeline markers



Mainline marker post



Huntsman marker post



BPA marker post



ConocoPhillips marker post



MLL marker post



BP marker post



Esso marker posts



Total marker post



GPSS marker post



Shell marker posts



Beware of posts with brass studs (such as the post above) which have cables connecting to the pipeline below.



New design marker post

Typical pipeline aerial markers



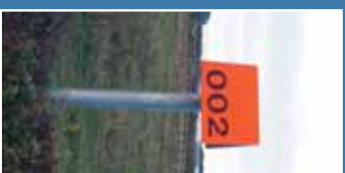
Shell aerial marker



Esso & MLP aerial marker



GPSS aerial marker



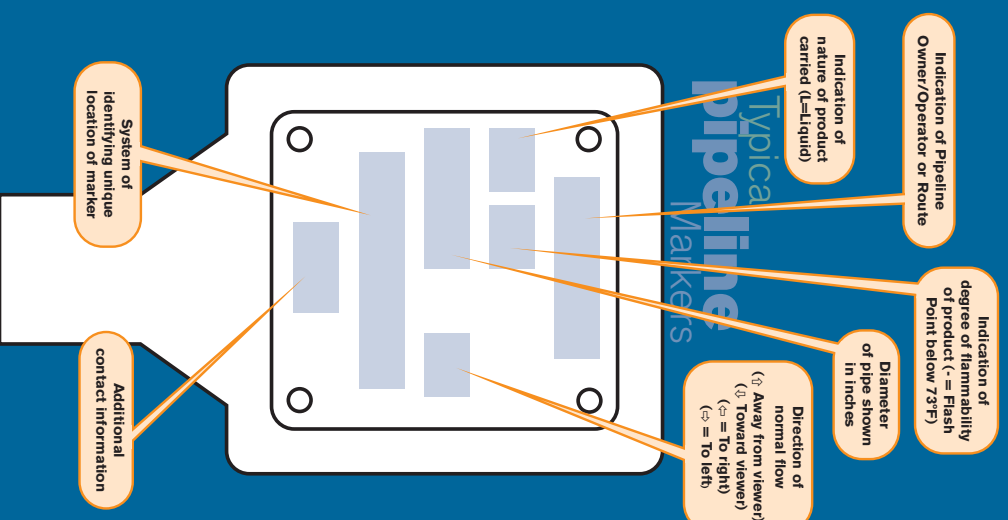
BP aerial marker



Plain orange with white stick

BPA
ConocoPhillips
Total/Huntsman
have similar aerial
markers to left

Standard symbols on marker posts

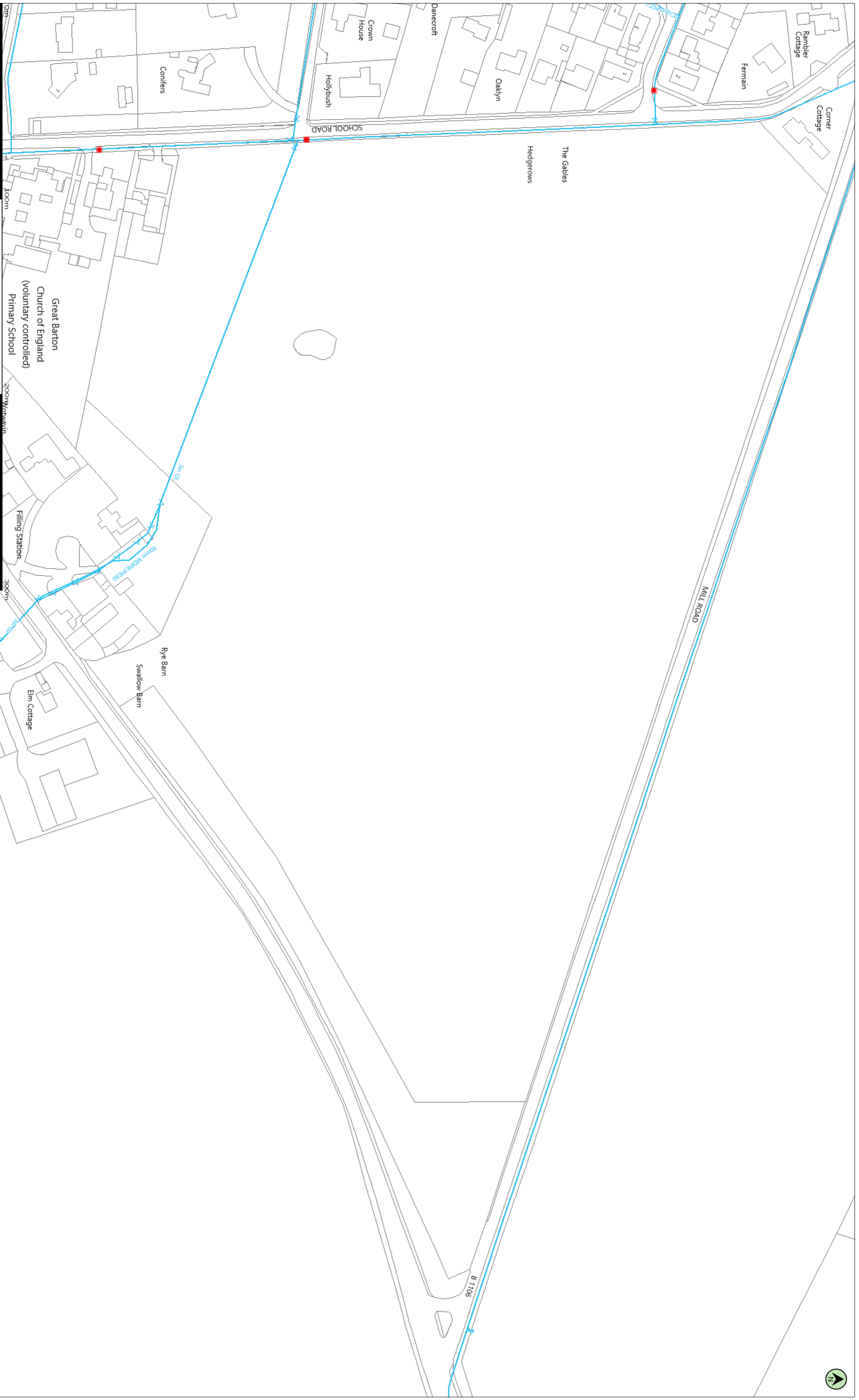


The above information may not appear in the same order as indicated and some items may be omitted

Useful pipeline enquiry sites

www.linewatch.co.uk

for links to individual pipeline websites
www.linesearch.org



(c) Crown copyright and database rights 2021. Ordnance Survey 100022432 Date: 12/04/21 Scale: 1:1250 Map Centre: 589430,267389

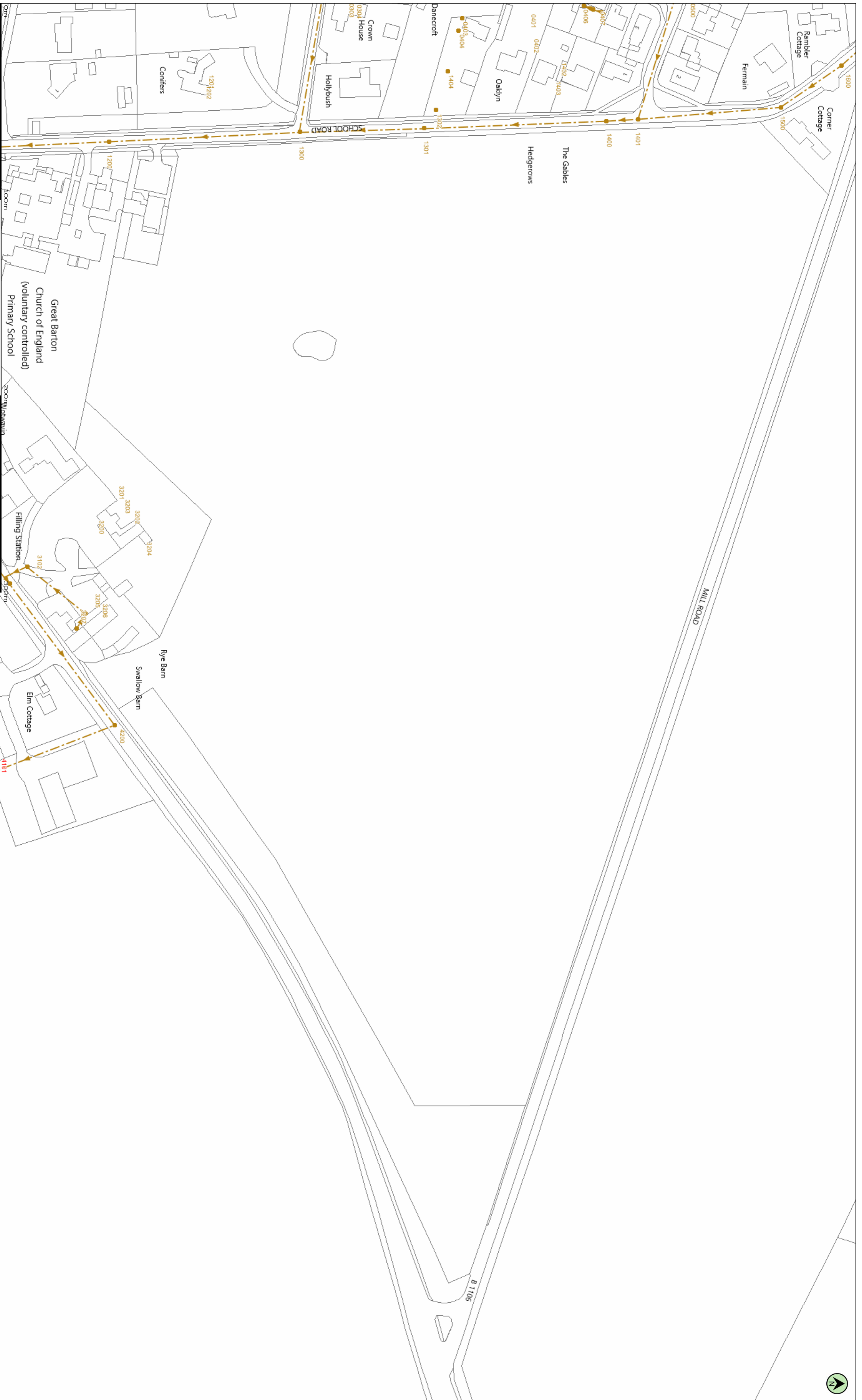
Our Ref: 537513 - 4 Clean Water Plan A2

This plan is provided by Anglian Water pursuant to its obligations under the Water Industry Act 1991 sections 198 or 199. It must be used in conjunction with any search results attached. The information on this plan is based on data currently recorded but position must be regarded as approximate. Service pipes, private sewers and drains are generally not shown. Users of this map are strongly advised to commission their own survey of the area shown on the plan before carrying out any works. The plan is provided for information only and does not constitute a contract. It is not intended to be used for the location of any service pipe, sewer or disposal main or any item of apparatus. This information is valid for the date printed. This plan is produced by Anglian Water Services Limited (c) Crown copyright and database rights 2021. Ordnance Survey 100022432. This map is to be used for the purposes of viewing the location of Anglian Water plant only. Any other uses of the map data or further copies is not permitted. This notice is not intended to exclude or restrict liability for death or personal injury resulting from negligence.

Potable Water		Fitting	
Raw Water		Hydrant	
Decommissioned Water			

utilitysearch@outlook.com
 barton





(c) Crown copyright and database rights 2021. Ordnance Survey 100022432

Date: 12/04/21

Scale: 1:1250

Map Centre: 589430,267389

Data updated: 01/04/21

Our Ref: 537513 - 5

Wastewater Plan A2

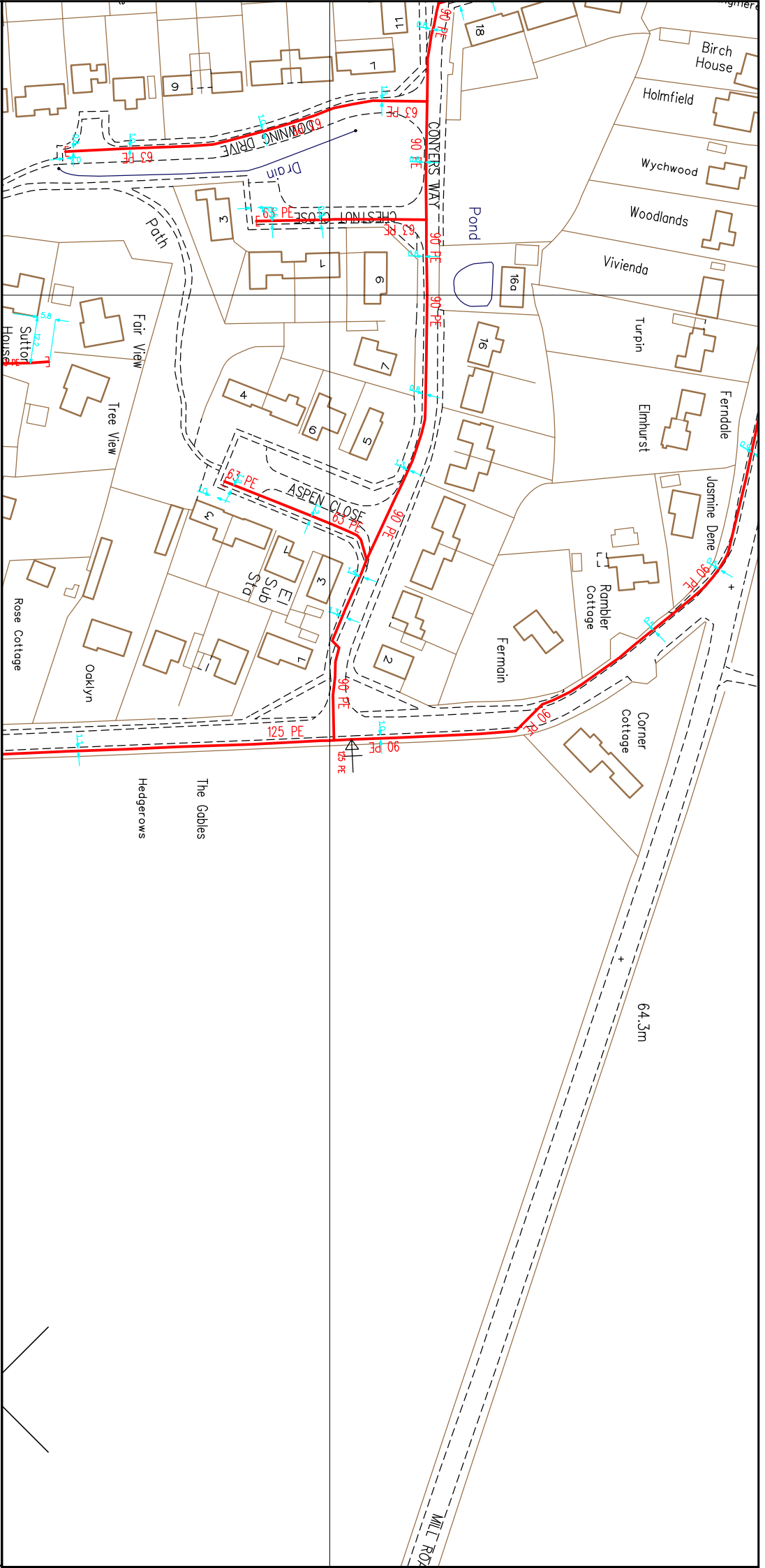
This plan is provided by Anglian Water pursuant to its obligations under the Water Industry Act 1991 sections 198 or 199. It must be used in conjunction with any search results attached. The information on this plan is based on data currently recorded but position must be regarded as approximate. Service pipes, private sewers and drains are generally not shown. Users of this map are strongly advised to commission their own survey of the area shown on the plan before commencing any works. All pipes shown are assumed to be in service unless otherwise stated. The plan is not intended to be used for the purpose of determining liability for personal injury resulting from negligence.

	Foul Sewer		Outfall		Sewage Treatment Works
	Surface Sewer		Inlet		Public Pumping Station
	Combined Sewer		Manhole		Decommissioned Pumping Station
	Final Effluent				Decommissioned Pumping Station
	Rising Main				Decommissioned Pumping Station
	Private Sewer				Decommissioned Pumping Station
	Decommissioned Sewer				Decommissioned Pumping Station

(Colour denotes effluent type)

utility/sitesearch@outlook.com
barton





SCALE: Not to scale

USER ID: Admin

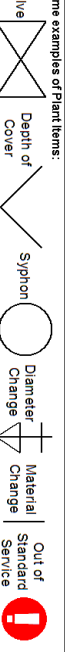
DATE: 12/04/2021

EXTRACT DATE: 01/03/2021

MAP REF: TL8967

CENTRE: 589149, 267515

Some examples of Plant Items:

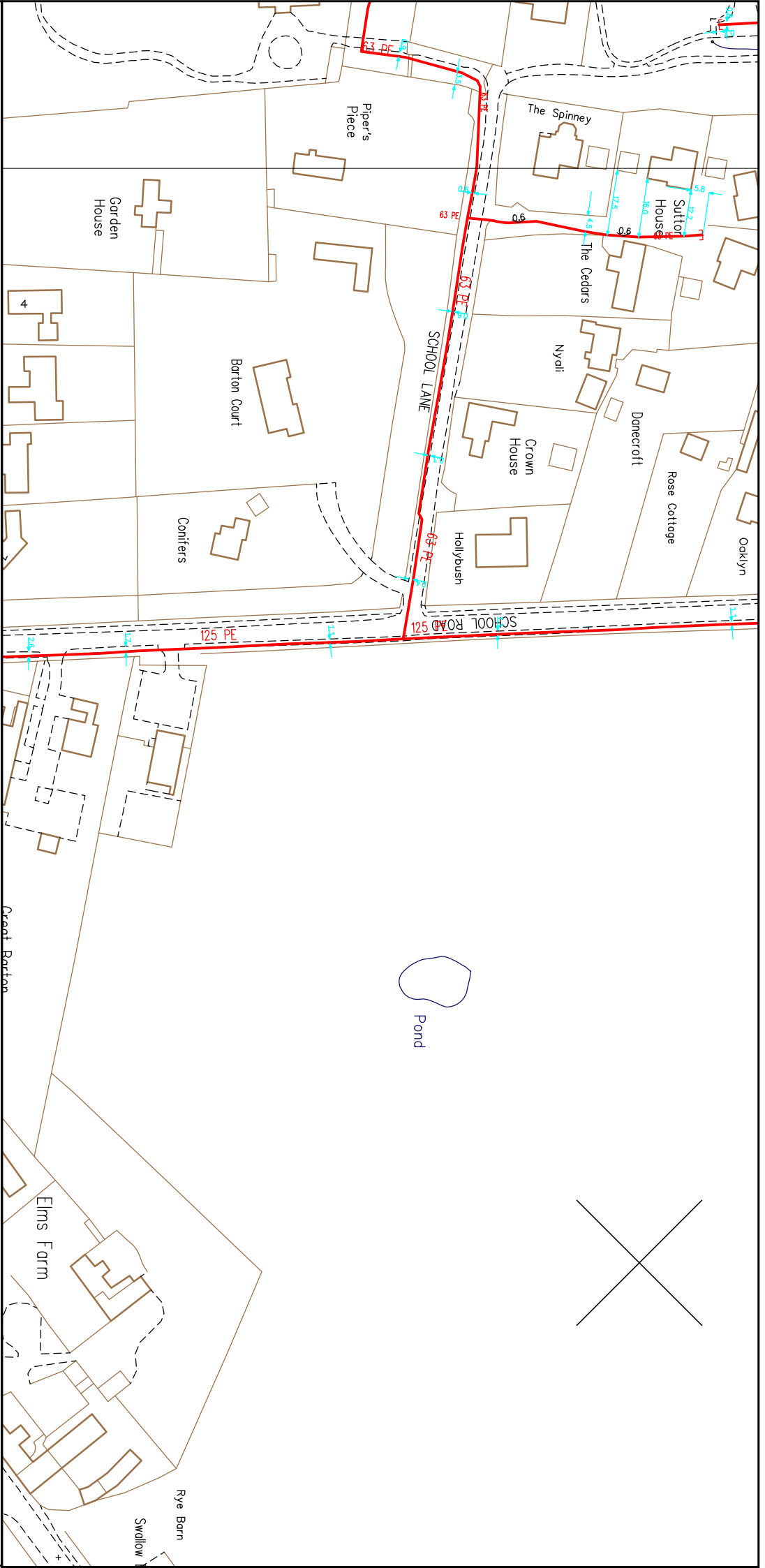


LP MAINS	
MP MAINS	
IP MAINS	
LHP MAINS	

This plan shows those pipes owned by Cadent Gas Ltd in their role as a Licensed Gas Transporter (GT). Gas pipes owned by other GTs, or otherwise privately owned, may be present in this area. Information without warranty, the accuracy thereof cannot be guaranteed. Service pipes, valves, syphons, stub connections, etc. are not shown but their presence should be anticipated. No liability of any kind whatsoever is accepted by Cadent Gas Ltd or their agents, servants or contractors for any error or omission. Safe digging practices, in accordance with HS(G)47, must be used to verify and establish the actual position of mains, pipes, services and other apparatus on site before any mechanical plant is used. It is your responsibility to ensure that this information is provided to all persons (either direct labour or contractors) working for you on or near gas apparatus. The information included on this plan should not be referred to beyond a period of 28 days from the date of issue. Further information on all DR4s can be determined by calling the DR4 hotline on 01455 892426 (9am-5pm) A DR4 is where a potential error has been identified within the asset record and a process is currently underway to investigate and resolve the error as appropriate.

MAPS Viewer Version 5.8.0.1

Local Machine
 This plan is reproduced from or based on the OS map by Cadent Gas Ltd, with the sanction of the controller of HM Stationery Office. Crown Copyright Reserved.



SCALE: Not to scale

USER ID: Admin

DATE: 12/04/2021

EXTRACT DATE: 01/03/2021

MAP REF: TL8967

CENTRE: 589188, 267316

LP MAINS	MP MAINS

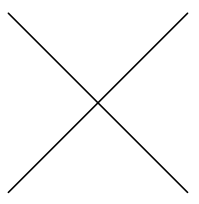
Some examples of Plant Items:	Diameter Change	Material Change	Out of Standard Service

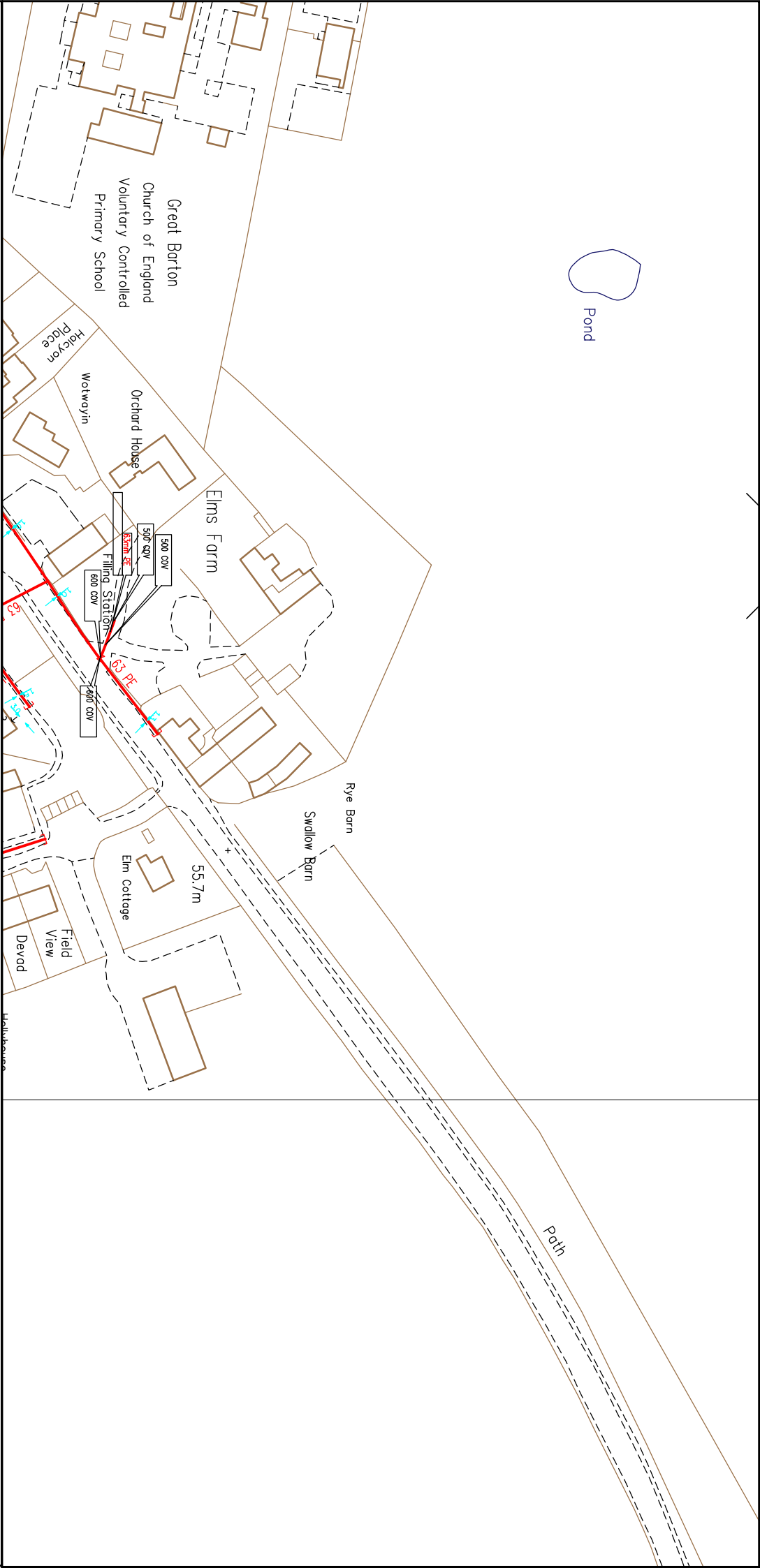
This plan shows those pipes owned by Cadent Gas Ltd in their role as a Licensed Gas Transporter (GT). Gas pipes owned by other GTs, or otherwise privately owned, may be present in this area. Information with regard to such pipes should be obtained from the relevant owners. The information shown on this plan is given without warranty, the accuracy thereof cannot be guaranteed. Service pipes, valves, syphons, stub connections, etc. are not shown but their presence should be anticipated. No liability of any kind whatsoever is accepted by Cadent Gas Ltd or their agents, servants or contractors for any error or omission. Safe digging practices, in accordance with HS(G)47, must be used to verify and establish the actual position of mains, pipes, services and other apparatus on site before any mechanical plant is used. It is your responsibility to ensure that this information is provided to all persons (either direct labour or contractors) working for you on or near gas apparatus. The information included on this plan should not be referred to beyond a period of 28 days from the date of issue. Further information on all DR4s can be determined by calling the DR4 hotline on 01455 892426 (9am-5pm) A DR4 is where a potential error has been identified within the asset record and a process is currently underway to investigate and resolve the error as appropriate.

MAPS Viewer Version 5.8.0.1

Local Machine

This plan is reproduced from or based on the OS map by Cadent Gas Ltd, with the sanction of the controller of HM Stationery Office. Crown Copyright Reserved.





Pond

Path

Elms Farm

Great Barton
Church of England
Voluntary Controlled
Primary School

Orchard House
Wotwoyin

Rye Barn
Swallow Barn

Elm Cottage

Field View
Devold

Waterhouse

55.7m

Filling Station

500 COV

500 COV

500 COV

500 COV

500 COV

500 COV

500 COV

500 COV

500 COV

500 COV

500 COV

500 COV

500 COV

500 COV

500 COV

500 COV

500 COV

500 COV

500 COV

500 COV

500 COV

This plan shows those pipes owned by Cadent Gas Ltd in their role as a Licensed Gas Transporter (GT). Gas pipes owned by other GTs, or otherwise privately owned, may be present in this area. Information with regard to such pipes should be obtained from the relevant owners. The information shown on this plan is given without warranty, the accuracy thereof cannot be guaranteed. Service pipes, valves, syphons, stub connections, etc. are not shown but their presence should be anticipated. No liability of any kind whatsoever is accepted by Cadent Gas Ltd or their agents, servants or contractors for any error or omission. Safe digging practices, in accordance with HS(G)47, must be used to verify and establish the actual position of mains, pipes, services and other apparatus on site before any mechanical plant is used. It is your responsibility to ensure that this information is provided to all persons (either direct labour or contractors) working for you on or near gas apparatus. The information included on this plan should not be referred to beyond a period of 28 days from the date of issue. Further information on all DR4s can be determined by calling the DR4 hotline on 01455 892426 (9am-5pm) A DR4 is where a potential error has been identified within the asset record and a process is currently underway to investigate and resolve the error as appropriate.

MAPS Viewer Version 5.8.0.1

Local Machine

This plan is reproduced from or based on the OS map by Cadent Gas Ltd, with the sanction of the controller of HM Stationery Office. Crown Copyright Reserved.

SCALE: Not to scale

USER ID: Admin

DATE: 12/04/2021

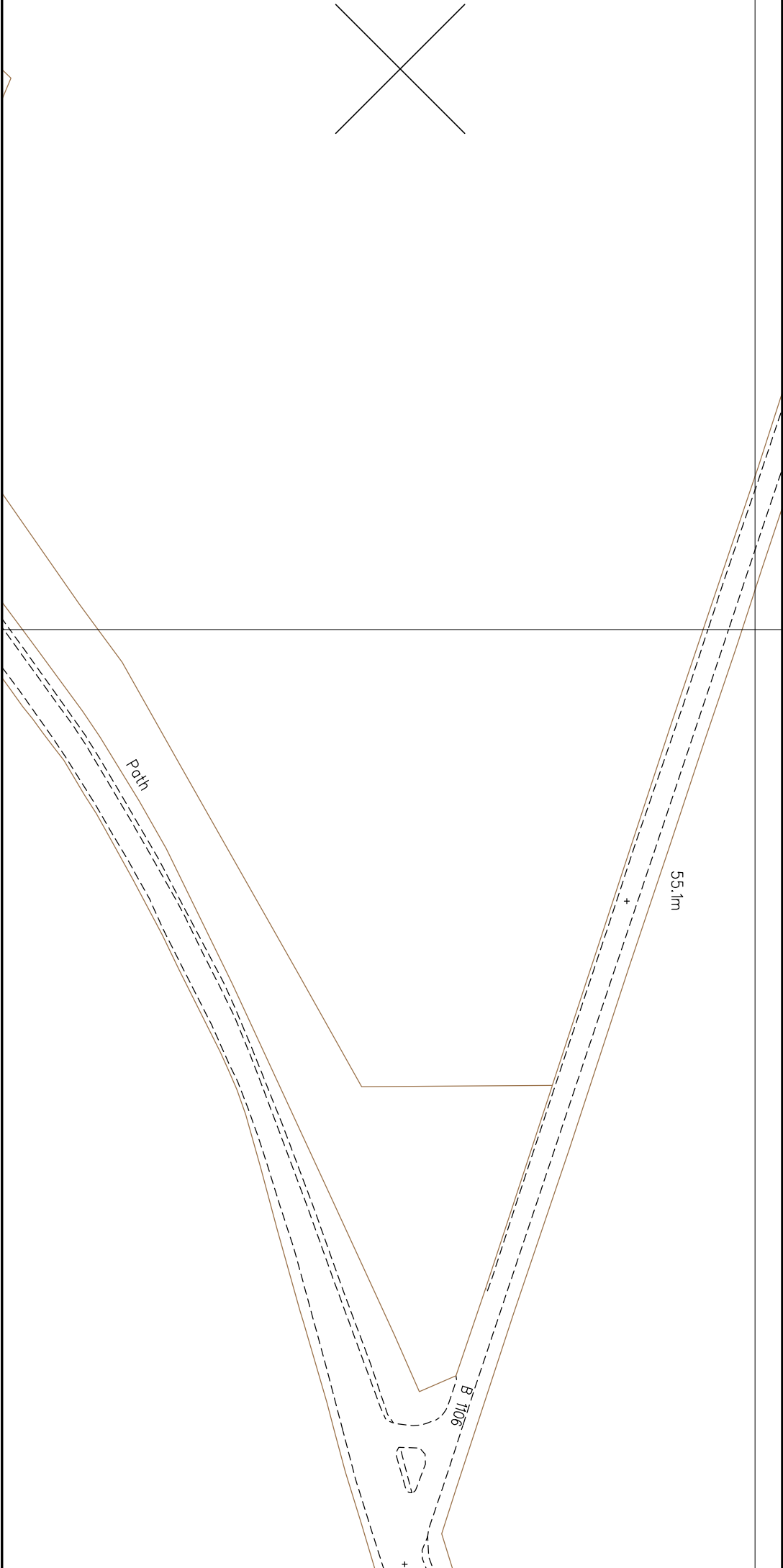
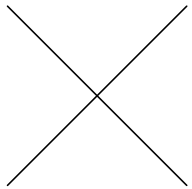
EXTRACT DATE: 01/03/2021

MAP REF: TL8967

CENTRE: 589404, 267264

Some examples of Plant Items:

LP MAINS	
MP MAINS	
IP MAINS	
LHP MAINS	
Valve	
Depth of Cover	
Syphon	
Diameter Change	
Material Change	
Out of Standard Service	



SCALE: Not to scale

USER ID: Admin

DATE: 12/04/2021

EXTRACT DATE: 01/03/2021

MAP REF: TL8967

CENTRE: 589540, 267393

LP MAINS	—
MP MAINS	—
IP MAINS	—
LHF MAINS	—

Some examples of Plant Items:

- Valve
- Depth of Cover
- Syphon
- Diameter Change
- Material Change
- Out of Standard Service

This plan shows those pipes owned by Cadent Gas Ltd in their role as a Licensed Gas Transporter (GT). Gas pipes owned by other GTs, or otherwise privately owned, may be present in this area. Information with regard to such pipes should be obtained from the relevant owners. The information shown on this plan is given without warranty, the accuracy thereof cannot be guaranteed. Service pipes, valves, syphons, stub connections, etc. are not shown but their presence should be anticipated. No liability of any kind whatsoever is accepted by Cadent Gas Ltd or their agents, servants or contractors for any error or omission. Safe digging practices, in accordance with HS(G)47, must be used to verify and establish the actual position of mains, pipes, services and other apparatus on site before any mechanical plant is used. It is your responsibility to ensure that this information is provided to all persons (either direct labour or contractors) working for you on or near gas apparatus. The information included on this plan should not be referred to beyond a period of 28 days from the date of issue. Further information on all DR4s can be determined by calling the DR4 hotline on 01455 892426 (9am-5pm) A DR4 is where a potential error has been identified within the asset record and a process is currently underway to investigate and resolve the error as appropriate.

MAPS Viewer Version 5.8.0.1

Local Machine

This plan is reproduced from or based on the OS map by Cadent Gas Ltd, with the sanction of the controller of HM Stationery Office. Crown Copyright Reserved.

National Gas Emergency Number:
0800 111 999*

National Grid Electricity Emergency Number:
0800 40 40 90*

* Available 24 hours, 7 days/week.
Calls may be recorded and monitored.

www.cadentgas.com

Date: 19/04/2021
Our Ref: EA_GE3B_3SWX_812836
Your Ref: Great Barton
RE: Proposed Works, bury St Edmonds

Thank you for your enquiry which was received on 19/04/2021.
Please note this response and any attached map(s) are valid for 28 days.

An assessment has been carried out with respect to Cadent Gas Limited, National Grid Electricity Transmission plc's and National Grid Gas Transmission plc's apparatus. Please note it does not cover the items listed in the section "Your Responsibilities and Obligations", including gas service pipes and related apparatus.
For details of Network areas please see the Cadent website (<http://cadentgas.com/Digging-safely/Dial-before-you-dig>) or the enclosed documentation.

As your works are at a "proposed" stage, any maps and guidance provided are for information purposes only. This is not approval to commence work. You must submit a "Scheduled Works" enquiry at the earliest opportunity and failure to do this may lead to disruption to your plans and works. Plant Protection will endeavour to provide an initial assessment within 14 days of receipt of a Scheduled Works enquiry and dependent on the outcome of this, further consultation may be required.

In any event, for safety and legal reasons, works must not be carried out until a Scheduled Works enquiry has been completed and final response received.

Your Responsibilities and Obligations

The "Assessment" Section below outlines the detailed requirements that must be followed when planning or undertaking your scheduled activities at this location.

It is your responsibility to ensure that the information you have submitted is accurate and that all relevant documents including links are provided to all persons (either direct labour or contractors) working for you near Cadent and/or National Grid's apparatus, e.g. as contained within the Construction (Design and Management) Regulations.

This assessment solely relates to Cadent Gas Limited, National Grid Electricity Transmission plc (NGET) and National Grid Gas Transmission plc (NGGT) and apparatus. This assessment does **NOT** include:

- | Cadent and/or National Grid's legal interest (easements or wayleaves) in the land which restricts activity in proximity to Cadent and/or National Grid's assets in private land. You must obtain details of any such restrictions from the landowner in the first instance and if in doubt contact Plant Protection.
- | Gas service pipes and related apparatus
- | Recently installed apparatus
- | Apparatus owned by other organisations, e.g. other gas distribution operators, local electricity companies, other utilities, etc.

It is **YOUR** responsibility to take into account whether the items listed above may be present and if they could be affected by your proposed activities. Further "Essential Guidance" in respect of these items can be found on either the [National Grid](#) or [Cadent](#) website.

This communication does not constitute any formal agreement or consent for any proposed development work; either generally or with regard to Cadent and/or National Grid's easements or wayleaves nor any planning or building regulations applications.

Cadent Gas Limited, NGGT and NGET or their agents, servants or contractors do not accept any liability for any losses arising under or in connection with this information. This limit on liability applies to all and any claims in contract, tort (including negligence), misrepresentation (excluding fraudulent misrepresentation), breach of statutory duty or otherwise. This limit on liability does not exclude or restrict liability where prohibited by the law nor does it supersede the express terms of any related agreements.

If you require further assistance please contact the Plant Protection team via e-mail ([click here](#)) or via the contact details at the top of this response.

Yours faithfully

Plant Protection Team

ASSESSMENT

Affected Apparatus

The apparatus that has been identified as being in the vicinity of your proposed works is:

- | Low or Medium pressure (below 2 bar) gas pipes and associated equipment. (As a result it is highly likely that there are gas services and associated apparatus in the vicinity)

Requirements

BEFORE carrying out any work you must:

- | Carefully read these requirements including the attached guidance documents and maps showing the location of apparatus.
- | Contact the landowner and ensure any proposed works in private land do not infringe Cadent and/or National Grid's legal rights (i.e. easements or wayleaves). If the works are in the road or footpath the relevant local authority should be contacted.
- | Ensure that all persons, including direct labour and contractors, working for you on or near Cadent and/or National Grid's apparatus follow the requirements of the HSE Guidance Notes HSG47 - 'Avoiding Danger from Underground Services' and GS6 – 'Avoidance of danger from overhead electric power lines'. This guidance can be downloaded free of charge at <http://www.hse.gov.uk>
- | In line with the above guidance, verify and establish the actual position of mains, pipes, cables, services and other apparatus on site before any activities are undertaken.

GUIDANCE

Excavating Safely - Avoiding injury when working near gas pipes:

http://www.nationalgrid.com/NR/rdonlyres/2D2EEA97-B213-459C-9A26-18361C6E0B0D/25249/Digsafe_leaflet3e2finalamends061207.pdf

Standard Guidance

Essential Guidance document:

<http://www2.nationalgrid.com/WorkArea/DownloadAsset.aspx?id=8589934982>

General Guidance document:

<http://www2.nationalgrid.com/WorkArea/DownloadAsset.aspx?id=35103>

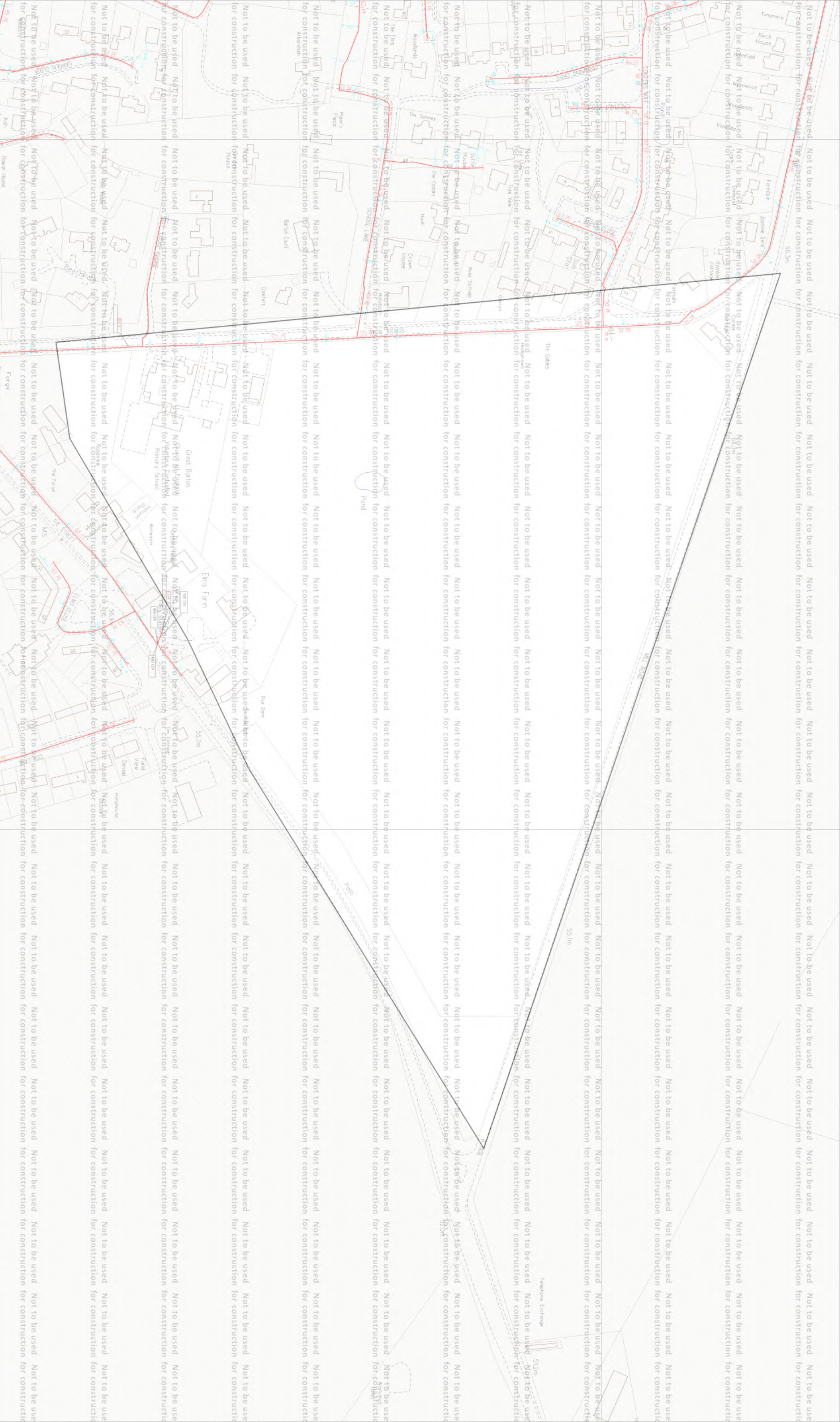
Excavating Safely in the vicinity of gas pipes guidance (Credit card):

<http://www.nationalgrid.com/NR/rdonlyres/A3D37677-6641-476C-9DDA-E89949052829/44257/ExcavatingSafelyCreditCard.pdf>

Excavating Safely in the vicinity of electricity cables guidance (Credit card):

<http://www.nationalgrid.com/NR/rdonlyres/35DDEC6D-D754-4BA5-AF3C-D607D05A25C2/44858/ExcavatingSafelyCreditCardelectricitycables.pdf>

Copies of all the Guidance Documents can also be downloaded from the [National Grid](#) and [Cadent](#) websites.



ID: EA_GE3B_3SWX_812836 View extent: 1030m, 610m

USER: doncaster1

DATE: 19/04/2021

DATA DATE: 18/04/2021

REF: Great Barton

MAP REF: TL8967
CENTRE: 589414, 267368

Some examples of Pipe Items:

- Depth or Cover
- Siphon
- Diameter Change
- Material Standard Change
- Out of Service

Map not to be used for construction

This plan shows those pipes owned by Cadent Gas Limited in its role as a Licensed Gas Transporter (GT). Gas pipes owned by other GTs, or otherwise privately owned, may be present in this area. Information with regard to such pipes should be obtained from the relevant owners. The information shown on this plan is given without warranty, the accuracy thereof cannot be guaranteed. Service pipes, valves, siphons, stub connections, etc., are not shown but their presence should be anticipated. No liability of any kind whatsoever is accepted by Cadent Gas Limited or their agents, servants or contractors for any error or omission. Safe digging practices, in accordance with HS(G)47, must be used to verify and establish the actual position of mains, pipes, services and other apparatus on site before any mechanical plant is used. It is your responsibility to ensure that this information is provided to all persons (either direct labour or contractors) working for you on or near gas apparatus. The information included on this plan should not be referred to beyond a period of 28 days from the date of issue.

Map 1 of 1 (GAS)

MAPS Plot Server Version 1.11.0

Requested by: UTILITYSITESEARCH

Your Gas Network

Cadent

This plan is reproduced from or based on the OS map by Cadent Gas Limited, with the sanction of the controller of HM Stationery Office. Crown Copyright Reserved. Ordnance Survey Licence number 100024886

ENQUIRY SUMMARY

Received Date

19/04/2021

Your Reference

Great Barton

Location

Centre Point: 589414, 267368

X Extent: 635

Y Extent: 525

Location Description: bury St Edmonds

Map Options

Paper Size: A3

Orientation: LANDSCAPE

Requested Scale: 2500

Actual Scale: 1:2500 (GAS)

Real World Extents: 1030m x 610m (GAS)

Description of Works

gpr

Enquiry Type

Proposed Works

Activity Type

General Excavation

Work Types

Work Type: Deep Excavation (greater than or equal to 0.3m)

Specification for safe working in the vicinity of Cadent assets - requirements for third parties



Cadent contact details



Contents

Introduction	02
1 Scope	05
2 Formal consent	05
3 Health, safety and environmental considerations	07
4 Asset locating	08
5 Temporary and permanent protective measures	09
6 Working in the vicinity of a gas asset exceeding 2bar	10
6.1 Excavation	
6.2 Construction traffic	
6.3 Specific activities	
6.4 Back-filling	
7 Working in the vicinity of a gas asset not exceeding 2bar	20
7.1 Excavation	
7.2 Construction traffic	
7.3 Specific activities	
7.4 Back-filling	
8 Working in the vicinity of an Above Ground Installation	29
9 Action in case of damage	29
10 References	30
11 Glossary of terms	30
Appendix A – Asset location markers	31

Disclaimer

This document is provided for use by third parties for safe working in the vicinity of Cadent assets. Where this document is used by any other party it is the responsibility of that party to ensure that this document is correctly applied.

Mandatory and non-mandatory requirements

In this document:

shall: indicates a mandatory requirement.

should: indicates best practice and is the preferred option.

If an alternative method is used then a suitable and sufficient risk assessment shall be completed to show that the alternative method delivers the same, or better, level of protection.

Smell gas? Call the free, 24 hour National Gas Emergency Service:

0800 111 999 *

*All calls are recorded and may be monitored

Introduction



Specification for safe working in the vicinity of Cadent assets – requirements for third parties.

This specification is for issue to third parties carrying out work in the vicinity of Cadent gas assets and associated installations. It is provided to ensure that individuals planning and undertaking work take appropriate measures to prevent damage.

Any damage to a gas asset, or its coating can affect its integrity and can result in failure of the asset with potentially serious hazardous consequences for individuals located in the vicinity.

It is therefore essential that the safety advice outlined in this document is complied with when working near to a Cadent asset. If Cadent consider any work to be in breach of the requirements stipulated in this document, then the Cadent responsible person will request that work is suspended until the non-compliances have been rectified.

Keeping you, your workers and the public safe when working near our pipelines.



The Pipelines Safety Regulations 1996 state that 'No person shall cause such damage to a pipeline as may give rise to a danger to persons' (Regulation 15). Failing to comply with these requirements could therefore result in prosecution by the Health and Safety Executive (HSE). The requirements in this document are in line with the requirements of the Institution of Gas Engineers and Managers (IGEM) recommendations (*GEM/SR/18 Edition 3 Safe Working Practices to Ensure the Integrity of Gas Assets and Associated Installations* and the HSE's guidance document *HS(G)47 Avoiding Danger from Underground Services*. It is the responsibility of the third party to ensure that any work carried out also conforms with the requirements of the Construction and Design Management (CDM) Regulations 2015 and all other relevant health and safety legislation.



Always contact Cadent prior to carrying out any work in the vicinity of Cadent assets

Contact Cadent

Contact Cadent on 0800 688588 to obtain formal consent at least 14 days before starting work. See [Section 2](#) for more details.

Consider safety

Consider the safety requirements – [Section 3](#) of this document.

Inform Cadent and request asset location

For asset location please contact Cadent at least 14 days before work starts to request formal asset location. See [Section 4](#) of this document.

Observe restrictions

Observe Cadent restrictions on the allowed proximity of mechanical excavators and other power tools and the measures to protect the asset from construction vehicles when carrying out the work – [Sections 5, 6.1, 6.2, 7.1 and 7.2](#) of this document. **Note: Cadent may wish to monitor the work, consult Cadent to confirm whether or not this is the case.**

Specific activities

- No-dig techniques
 - Change in cover
 - Piling
 - Seismic surveys
 - Hot work
 - Blasting
 - Demolition
 - Surface mineral extraction
 - Landfilling
 - Pressure testing
 - Deep mining
 - Wind and solar farms
 - Crossing with plant and equipment
- See [Sections 6.3 & 7.3](#)

Consult Cadent

Consult Cadent prior to any backfilling over, alongside or under the asset and obtain Cadent's agreement to proceed. Normally Cadent requires 48 hours' notice prior to backfilling. See [Sections 6.4 & 7.4](#) of this document.

Important: This flowchart should be used in conjunction with the entire SSW22 document and not in isolation. If, at any time during the works, the asset is damaged even slightly then observe the precautions in [Section 9](#) of this document.

If in doubt, contact Cadent.

1 Scope

This specification sets out the safety precautions and other conditions associated with working in the vicinity of all Cadent assets, located in both negotiated easements (see [Section 11](#)) and public highways.

2 Formal consent

Cadent assets are located either, within an easement agreed with the landowner (at the time of installation) or within the highway. As the required arrangements for working within an easement and working within the highway differ, this document highlights the specific requirements for these two types of area.

No work shall be undertaken in the vicinity of the asset without the formal written consent of Cadent.

Any documents handed to contractors, or other individuals undertaking work (e.g. farmer, local authority etc.), on site by Cadent, shall be signed for by the site manager (to be shared with all individuals on site).

